

Ashtons



The Stables Broad Lane Appleton Roebuck YO23 7DS

£895 Per Calendar Month

1



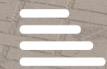
1



1

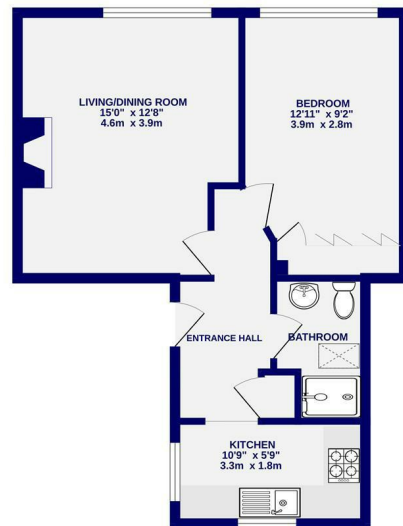


D



A converted property just outside of the lovely village of Appleton Roebuck, a picturesque area with commuter links to York City Centre, Tadcaster and beyond. Offered for let on a furnished basis the accommodation is set over one floor and briefly comprises of entrance hallway; spacious lounge; kitchen equipped with cooker, fridge, freezer and washing machine; bedroom with fitted storage (double bed can be provided) and shower room. To the rear is a yard for sole use of the tenant and a parking space to the front.

Available Now / 6 Month Initial Tenancy / Deposit £995 / Council Tax Band A / EPC Rating D



TOTAL FLOOR AREA: 475 sq ft (44.1 sq m) approx.
While every attempt has been made to ensure the accuracy of the description, measurements of rooms and any other areas are approximate. Included in the plan the measurements are taken to the internal face of the walls.
Room sizes are approximate and should be used as a guide only. The actual dimensions of the property may vary.
Illustrations shown must not be relied upon and are provided as a guide only.
Made with MetreX 12025



Ashtons Lettings

01904 731404

lettings@ashtonsnet.com

